

Independent Doors Cavity Sliders

Independent Doors has provided this declaration to satisfy the provisions of Schedule 1(d) of the building (Building Product Information Requirements) Regulations 2022.

In accordance with Regulations 8, Independent Doors confirm that the information supplied as well as the company's own processes and is therefore to the best of our knowledge, correct. Independent Doors Cavity Sliders, as referred to in this statement, is not subject to a warning or ban under s26 of the Building Act.

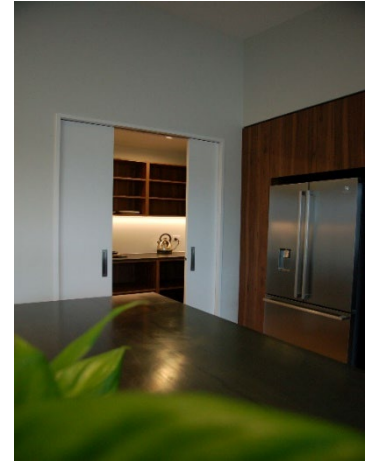
Designated building product: Class 2

TECHNICAL STATEMENT:

Cavity Sliders are space-efficient door systems designed to slide and disappear into a concealed wall pocket, offering a seamless solution for creating open, flexible spaces.

PRODUCT DESCRIPTION:

Cavity Sliders represent a cutting-edge architectural door system that excels in optimizing spatial utilization while simultaneously introducing a sophisticated touch to interior design. This innovative product seamlessly integrates into walls, enabling doors to effortlessly slide and disappear into concealed pockets upon opening, effectively eliminating the need for additional swing clearance and providing a seamless transition between spaces. In both residential and commercial applications, cavity sliders offer a pragmatic and refined solution for fostering open, adaptable spaces.



The principal constituents comprising of a Cavity Slider assembly:

- **Frame:** The frame serves as the structural framework for the cavity slider. It is installed within the wall and provides support for the other components.
- **Tracks and rollers:** A head track can be found at the top of the cavity pocket, mounted above the doorway, and rollers are affixed to the top of the door. These elements enable the door to slide smoothly along the track, allowing it to move in and out of the wall pocket.
- **Additional Components:** Soft close and Soft open & jexis
- **Door:** The door itself is a significant component. It can be a solid panel, or a door with various finishes and styles. The most used doors found in a cavity slider is a polycore steel strengthened door. The door is attached to the rollers and slides within the wall.
- **Cavity or wall pocket:** The cavity or wall pocket is a concealed space within the wall where the door retracts when opened. It's a crucial element as it hides the door when not in use, optimizing space.
- **Hardware:** Cavity sliders usually incorporate a privacy flush pull or a standard flush pull depending on the area where the cavity slider is located.
- **Framing finish:** The jamb is finished in a Pine Grooved or Architrave jamb – generally to suite a 70mm up to 190mm stud and 10mm or 13mm gib. There is a range of options available from [standard height cavities](#), [full height detail cavities](#), [full height detail and no closing jamb cavities](#), [Bracewall cavities](#).



Company Contact Details

Physical Address:	57 Waterloo Rd, Hornby, 8042
Postal Address:	P.O. Box 13086 Hornby
Telephone:	03 384 1113
Fax:	03 384 2277
Email:	info@iddoors.co.nz
Website:	www.iddoors.co.nz

CAVITY SLIDERS:

Door Type	Leaf Style	Jamb Type	Height Range	Width Range
Single	Flush Panel	Grooved / Architrave	1980 - 3000	410 - 2410
	Grooved Panel			

JAMB TYPES:

Cavity Jamb offers a range of design options to suit various architectural and functional preferences. Three primary choices include grooved jambs, architrave jambs and the option for no closing jamb (NCJ).

The standards for grooved jambs are 90mm stud and 10mm gib. The standards for architrave jambs is 112mm or 116mm.

Custom jambs are available on request.

[Product Technical Statement](#)

[Environmental Product Declaration](#)

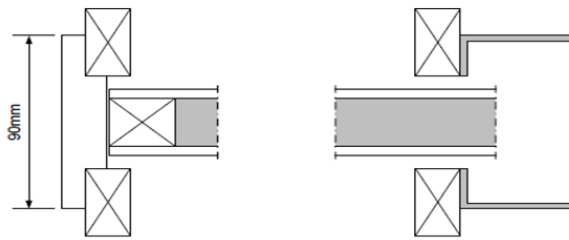
JAMB DETAIL



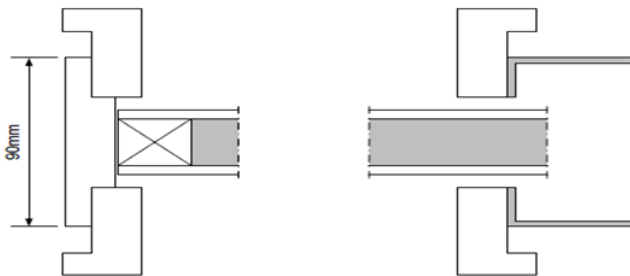
FINISHING DETAIL



Architrave



Grooved



DOOR CORE OPTIONS:

ULCD Doors have a polyurethane foam core, steel-strengthened doors are known for their strength and resistance to wear and tear. This is particularly important for cavity sliders, as they undergo movement. Steel reinforcement ensures the door remains sturdy. ULCD doors come in various designs and finishes, allowing for customization to match overall décor of a room.

DOOR STYLES:

Options are available in [flush](#) panels, [V-Groove](#), [Vogue](#), [Milano](#), [moulded](#) and [glazing](#), please note doors with glazing in a cavity slider must have flush beading.

CONFIGURATION OPTION:

SINGLE



Single door slides back into a pocket

BI-PARTING



One door slides from each pocket, meeting in the middle

CORNER MEETING



One door slides from each pocket, meeting on 90° angle

OVERTAKING®



Two (or more) doors slide out from a single pocket

GLAZING OPTIONS:

Selecting the right glazing for your doors is crucial, as it not only impacts the aesthetics but also the functionality and safety of your space. The 5mm clear float glass provides a clean, transparent look, allowing natural light through.

For enhanced strength and safety, the 4mm toughened glass is a popular choice, as it is highly resistant to breakage and shattering.

The 6.38mm clear laminate glass is designed for added security and sound insulation, comprising of two layers of glass bonded by a layer of clear laminate for improved durability.

The opalescent glazing infuses a touch of artistry into your space, providing both privacy and a soft, diffused light.

SCOPE OF USE:

Cavity Sliders, also known as pocket doors or sliding door systems, offer a practical and space-saving solution for a variety of applications in both residential and commercial settings.

- Residential Interior Doors:
 - Cavity Sliders are commonly used for interior doors within a home. They are ideal for spaces like bedrooms, bathrooms, walk-in-robos, and pantries.
- Open Plan Living:
 - Cavity Slider can be used to create open-plan living areas by dividing or connecting rooms as needed. For example, you can slide the doors to separate a living from a dining area and then slide them back to create a larger combined space for entertaining.
- Space Optimization:
 - In small living spaces, such as apartments or tiny houses, cavity sliders maximise the usable space by eliminating the need for door swing clearance.
- Accessibility:
 - Cavity sliders are available for wheelchair-access and provide ease of movement for individuals with mobility challenges.
- Commercial Applications:
 - In commercial settings, cavity sliders are used for conference rooms, offices, and other spaces where flexibility in room layout is required.
- Bathroom & Ensuite Doors:
 - Cavity Sliders can be used for bathroom and ensuite doors, offering privacy while saving space in smaller areas.
- Wardrobe Doors:
 - Cavity Sliders are becoming more popular with walk-in wardrobes to access closet spaces efficiently.
- Architectural Flexibility:
 - Architects and interior designers use cavity sliders to achieve unique and innovative design concepts, providing a seamless transition between spaces.

It is important to consider the weight, size and design of the cavity sliders, as well as the quality of the installation, to ensure they function properly.

CAVITY SLIDER CALCULATORS:

[Cowdroy Calculator](#)

[Hallmark Calculator](#)

[CS For Doors Calculator](#)

SUPPORTING EVIDENCE:

Independent Doors 2022 Ltd have provided various cavity sliders, [Cowdroy](#), [Hallmark](#) and [CS for Doors](#) in Commercial, residential, and institutional projects in New Zealand since 1994 the Cavity sliders and the doors are backed by our suppliers' warranties, [Cowdroy](#), [Hallmark](#) and [CS For Doors](#).

CONTRIBUTIONS TO COMPLIANCE:

- All glazing options conforms to [NZS4223.3.2016](#) regulations.
- All doors conform to and are to be installed as per [NZAUS3604](#) regulations.

MAINTENANCE REQUIREMENTS:

- Doors must not be stored or hung in damp or freshly plastered areas.
- Doors must be stored flat prior to hanging
- PAINTING: Both faces, and all four edges of exterior doors must be sealed and painted using a quality paint, applied strictly in accordance with [the manufacturers' recommendations](#). It is recommended exterior doors be painted in a light reflective colour. IDL recommend Resene "Cool Colours" for dark tones to minimise timber shrinkage, warping & twisting. Doors painted in dark colours or that are NOT properly sealed all 6 edges upon taking delivery void any warranty against the above.
- We strongly recommend against staining, blanding and the use of linseed oil on veneered doors. The use of such products is carried out entirely at the owner's risk and invalidates any warranty.
- Doors must be hung on a minimum of 3 hinges.

INSTALLATION INSTRUCTIONS:

Click on the links below for the different Cavity Slider manufacturers guidance around the installation of their cavity sliders:

[Cowdroy](#)

[Hallmark](#)

[CS For Doors](#)

ENVIRONMENTAL:

Independent Doors is 100% New Zealand owned and all products are 100% New Zealand made. Independent Doors operates a zero-waste policy with all metal offcuts and waste recycled. Timber components are made from pine from sustainable resources.